

# imou



## Ranger 2

### 1080P H.265 Wi-Fi Pan & Tilt Camera

With 1080P Full HD live monitoring and 0~355° pan & -5~80° tilt features, Ranger 2 ensures every corner of your home completely covered. Human Detection quickly finds human targets in images and immediately sends a notification to you. Privacy Mode helps protect your personal privacy when you are home, and Smart Tracking function lets the camera follow moving objects when it detects motion.



#### H.265 1080P Full HD

See more than 720P



#### Smart Tracking

Automatically tracks moving objects



#### Privacy Mode

Hide the lens to protect your personal privacy



#### Human Detection

Quickly find human targets in your home



#### Abnormal Sound Alarm

Sends alerts to your smartphone when it detects abnormal sound



#### Alarm Notification

Sends instant alerts to your mobile phone when an event is detected



#### Built-in Siren

Scare strangers away from your home



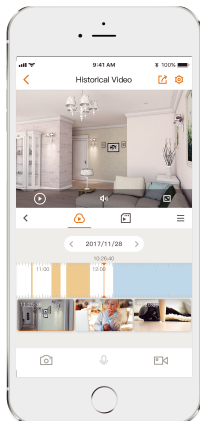
#### Diversified Storage

Supports NVR, Cloud Storage or Micro SD card (up to 256GB)



#### Two-way Talk

Communicate with family and pets easily

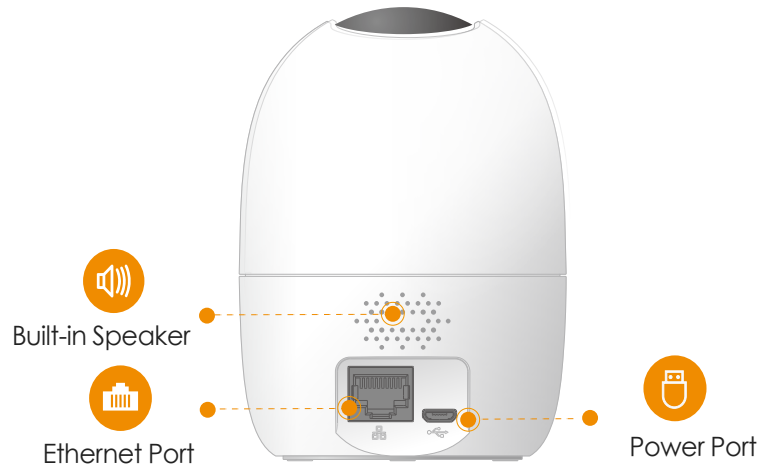


## Stay close with what you care

With Cloud service, you will have access to what you care as long as Internet is available. You can record daily or motion videos on Cloud and play back anytime anywhere.



Front View



Back View

## Specifications

### Camera

1/2.7" 2Megapixel Progressive CMOS  
2MP(1920 x 1080)  
Night Vision: 10m(33ft) Distance  
3.6mm Fixed Lens  
Field of View : 93° (H), 48° (V), 115° (D)  
355° Pan & -5~80° Tilt

### Video & Audio

Video Compression : H.265/H.264  
Up to 25/30fps Frame Rate  
16x Digital Zoom  
Two-way Audio

### Notice Management

Motion Detection  
Human Detection  
Configurable Region  
Abnormal Sound Alarm

### Network

Wi-Fi: IEEE802.11b/g/n, 50m Open Field  
Imou App: iOS, Android  
onvif

### Auxiliary Interface

Micro SD Card Slot (up to 256GB)  
Built-in Mic & Speaker  
Reset Button

### General

DC 5V1A Power Supply  
Power Consumption: < 3.5W  
Working Environment: -10° C ~ +45° C, Less Than 95%RH  
Dimensions: 106.1 × 77.4 × 77.4mm (4.17 × 3.04 × 3.04 inch)  
Weight: 238g (0.52lb)  
CE, FCC

## What's in the box

- 1x Camera
- 1x Quick Start Guide
- 1x Power Adapter
- 1x Power Cable
- 1x Screw Package
- 1x Mounting Plate
- 1x Installation Position Map



## Operating With Imou App

### Step 1

Scan the following QR code or search “Imou” in Google Play or App Store to download and install Imou App.



### Step 2

Run Imou App, and then register an account for first use.

### Step 3

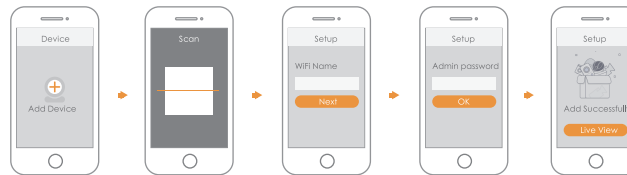
Connect the camera to power source with the power adapter.

### Step 4

Wait for booting to be finished, and then the camera indicator flashes with green light.

### Step 5

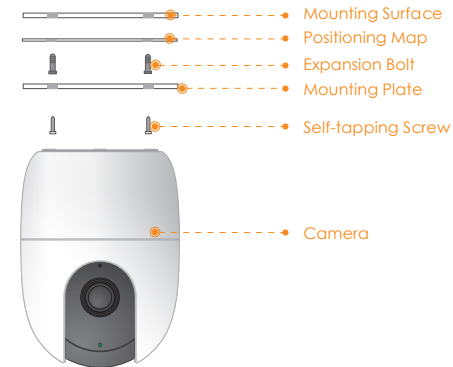
Connect your smart phone to your Wi-Fi network, and make sure your smartphone is connected to Wi-Fi network with 2.4 GHz band, and then do the following operations to finish adding camera.



- Note:**
- If you have more than one camera, do step 5 to add them one by one.
  - If the Wi-Fi network changed or the indicator status goes wrong, reset the camera, and then do step 5 to add it again.

## Installing Camera

**Note:** Make sure the mounting surface is strong enough to hold at least three times of the device weight.

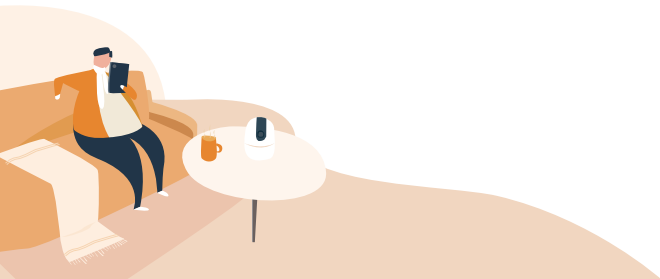


- Step1** Drill screw holes on the mounting surface as the mounting map shows, and then put in the expansion bolts.
- Step2** Attach the mounting plate to the mounting surface with the self-tapping screws.
- Step3** Attach the camera to the mounting plate, then power it up, and then, adjust the lens to the ideal angle.

# Imou

## Quick Start Guide

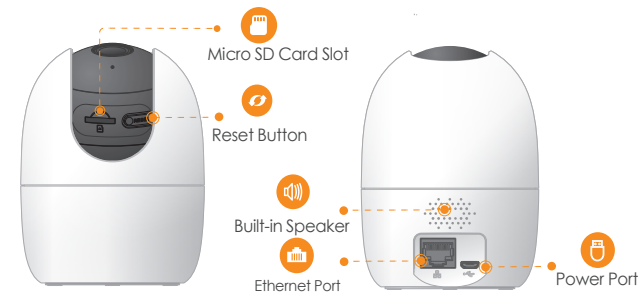
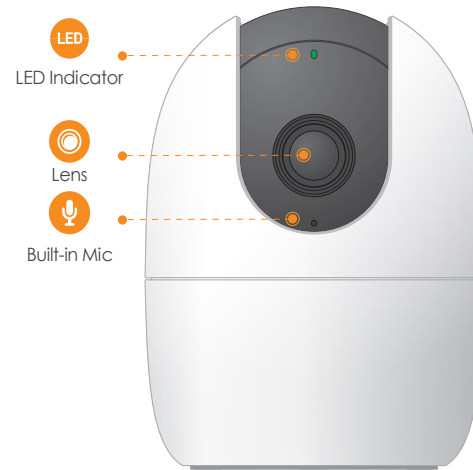
Version 1.0.0



### Packing List



### Camera Introduction



**Note:** Press and hold the reset button for 10 s to reset the camera.

The pattern of the LED indicator is included in the following table.

LED Indicator Status	Device Status
Off	<ul style="list-style-type: none"><li>Powered off/LED turned off</li><li>Rebooting after reset</li></ul>
Red light on	<ul style="list-style-type: none"><li>Booting</li><li>Device malfunction</li></ul>
Green light flashing	Waiting for network
Green light on	Operating properly
Red light flashing	Network connection failed
Green and Red light flashing alternately	Firmware updating